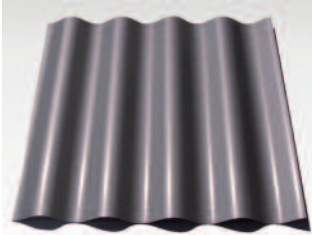


## News Release



**Contact:** Penelope Baker  
MetalTech-USA  
770-486-8825  
penelope@metaltch-usa.com

### For Immediate Release



Click photo to view larger image and/or download.

## MetalTech-USA Announces Introduction of 7/8" Sinusoidal Corrugated Metal Panels

*New metal profile offers unlimited architectural design possibilities*

**PEACHTREE CITY, GA., August 3, 2009** – MetalTech-USA has announced its latest new product offering, a 7/8" sinusoidal corrugated metal panel. The sinusoidal profile is ideal for use in roofs, facades, small buildings, and as design accents in larger commercial buildings. MetalTech-USA's perforating capabilities add unlimited design possibilities. The corrugated metal panels are available in zinc, copper, stainless steel, Cor-ten steel and more.

Easy to install and maintain, MetalTech-USA's corrugated panels are a ventilated curtain screen wall system. Traditional fastening calls for exposed fastening directly through the panel surface using appropriate screws with sealing washers or riveting. *(PB Note: hidden fastening systems available?)*

"The 7/8" corrugated sinusoidal panel has a wide range of uses," said Nils Simonsen, CEO of MetalTech-USA. "We have the capability to deliver a broad range of design options in this popular corrugated metal profile to architects and contractors."

The corrugated sinusoidal panels join MetalTech-USA's other products and services including: rainwater goods, metal sheets and coils, accessories, tools, pre-fabricated metal panels for facades and roofs, rapid prototyping, and installer training.

### About MetalTech-USA

Metal Tech-USA is a premier distributor and fabricator of environmentally friendly architectural metals. In partnership with RHEINZINK America, Allegheny Ludlum and Revere Copper, MetalTech-USA is working to promote the sustainable use of metals in architecture. For more information, visit [www.metaltch-usa.com](http://www.metaltch-usa.com), or call 770-486-8825.

###